

# MULTI-PURPOSE FLEXIBLE CONVENTION CENTRE

AUCKLAND  
CONVENTIONS  
venues & events



## AOTEA CENTRE

The Aotea Centre houses New Zealand's largest modern tiered auditorium, seating more than 2,000 people over three levels. Whether you are holding a conference, seminar, exhibition, awards ceremony, product launch, cocktail party or gala dinner, the Aotea Centre has a space to suit.

Auckland Conventions Venues & Events

T 0800 54 98 98 | +64 9 307 5498 | 1800 54 98 98 (AUST)

E [events@aucklandconventions.co.nz](mailto:events@aucklandconventions.co.nz) W [aucklandconventions.co.nz](http://aucklandconventions.co.nz)

### Features

Auditorium seating for over 2,000

Flexible spaces to suit all event styles

Multiple breakout rooms

Central Auckland location

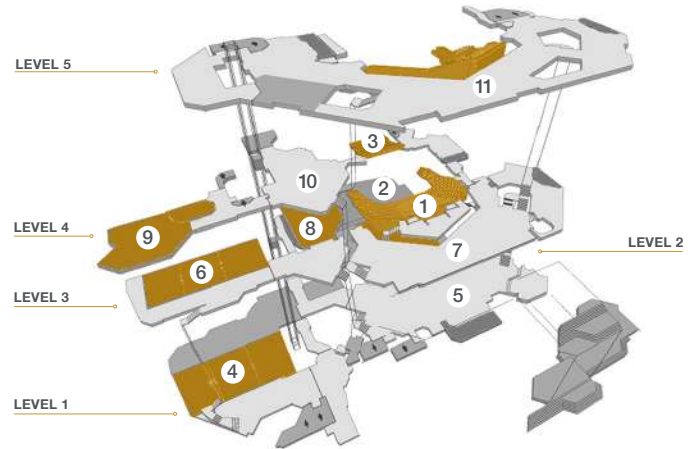
Close proximity to The Civic carpark



# AOTEA CENTRE

Aotea Centre's stylish new interior provides a fitting backdrop for conferences, dinners, exhibitions and tradeshows. The open design, expansive foyers and function spaces make it an ideal place for collaboration and business gatherings.

Take the [Aotea Centre Virtual Tour](#)



## Capacity Chart

ROOMS	HEIGHT m	AREA m <sup>2</sup>	THEATRE	CLASSROOM	U-SHAPE	CABARET	BANQUET	COCKTAIL	EXHIBITION
Kiri Te Kanawa Theatre <b>1</b>	—	—	2139	—	—	—	—	—	—
Kiri Te Kanawa Stage <b>2</b>	—	—	—	—	—	—	160	300	—
Herald Theatre <b>3</b>	—	—	186	—	—	—	—	—	—
Hunua Rooms including foyers   Level 1	4.35m	909m <sup>2</sup>	778	376	—	464	580	900	32
Hunua Rooms excluding foyers <b>4</b>	4.35m	571m <sup>2</sup>	528	284	—	304	380	570	—
Hunua 1	4.35m	204m <sup>2</sup>	186	92	44	112	120	200	—
Hunua 2	4.35m	187m <sup>2</sup>	185	88	44	104	120	180	—
Hunua 3	4.35m	180m <sup>2</sup>	169	88	36	96	110	180	—
Stalls Foyer   Level 2 <b>5</b>	2.97m	800m <sup>2</sup>	—	—	—	—	—	800	20
Waitākere Rooms including foyers   Level 3	2.70m	518m <sup>2</sup>	350	264	—	280	300	500	18
Waitākere Rooms excluding foyers <b>6</b>	2.70m	368m <sup>2</sup>	322	196	—	200	240	370	—
Waitākere 1	2.70m	137m <sup>2</sup>	125	56	36	72	90	140	—
Waitākere 2	2.70m	125m <sup>2</sup>	100	40	36	56	70	125	—
Waitākere 3	2.70m	106m <sup>2</sup>	90	36	36	48	60	100	—
BNZ Circle Foyer   Level 3 <b>7</b>	4.97m	460m <sup>2</sup>	—	—	—	—	—	460	22
Limelight Rooms   Level 3 <b>8</b>	2.50m	318m <sup>2</sup>	180	92	—	120	140	300	10
Limelight 1	2.50m	125m <sup>2</sup>	100	60	32	64	80	125	—
Limelight 2	2.50m	193m <sup>2</sup>	120	64	40	80	90	190	—
Waihorotiu 1   Level 4 <b>9</b>	2.68m	180m <sup>2</sup>	100	60	36	80	90	180	—
Waihorotiu 2   Level 4	2.40m	40m <sup>2</sup>	25	—	16	16	20	40	—
QBE Gallery   Level 4 <b>10</b>	2.50m	240m <sup>2</sup>	—	—	—	—	—	200	10
Air New Zealand Balcony Foyer   Level 5 <b>11</b>	2.98m	1100m <sup>2</sup>	—	—	—	—	—	1000	42

**Please note:** All capacities are a guideline only and are based on the maximum use of the space available for standard setups. They may be reduced by staging, technical equipment, dance floors, type of menu being served or entertainment.



# TRANSFORM

YOUR EVENT INTO A MASTERPIECE

AUCKLAND  
CONVENTIONS  
venues & events



## AUCKLAND ART GALLERY

Combining modern and heritage architecture, Auckland Art Gallery Toi o Tāmaki is home to more than 17,000 works of art. Find an inspirational backdrop for your next event amongst our collection of versatile spaces.

Auckland Conventions Venues & Events

T 0800 54 98 98 | +64 9 307 5498 | 1800 54 98 98 (AUST)

E [events@aucklandconventions.co.nz](mailto:events@aucklandconventions.co.nz) W [aucklandconventions.co.nz](http://aucklandconventions.co.nz)

### Features

Award-winning architecture

Celebrated mix of modern and heritage architecture

Home to more than 17,000 works of art

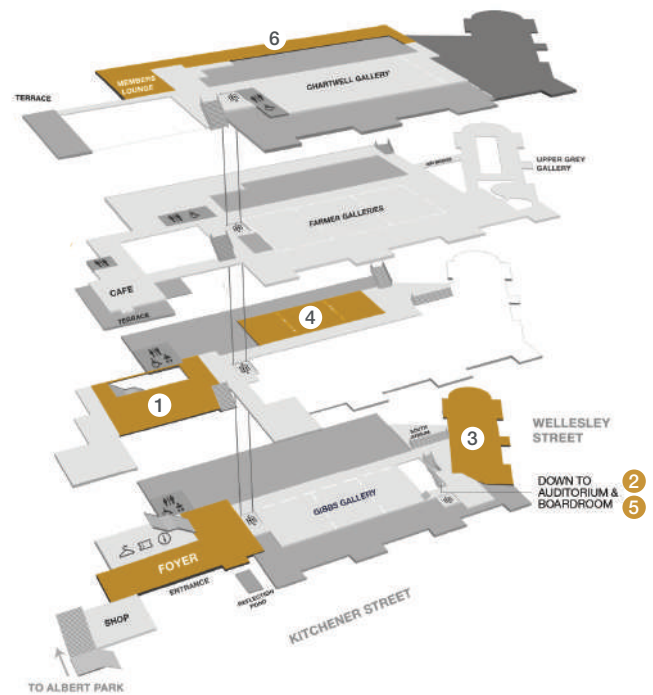
Renowned for excellent acoustics

Perfect choice for weddings and banquet dinners



# AUCKLAND ART GALLERY

The gallery is both one of the newest and oldest event venues in the city. A multi-million dollar restoration and expansion project was completed in 2011 which has transformed the gallery into one of Auckland's most desirable venues. In 2013, the gallery won the prestigious title of World Building of the Year at the World Architecture Festival.



## Capacity Chart

ROOMS	HEIGHT m	AREA m <sup>2</sup>	THEATRE	BANQUET	COCKTAIL	BOARDROOM
North Atrium ①	Varied	243m <sup>2</sup>	160	130	250	—
Auditorium ②	Varied	—	150	—	—	—
Lower Grey Gallery ③	Varied	220m <sup>2</sup>	80	80	120	—
Mackelvie Gallery ④	Varied	270m <sup>2</sup>	100	110	120	—
Boardroom ⑤	—	50.4m <sup>2</sup>	30	—	—	16
East Terrace ⑥	—	325m <sup>2</sup>	—	—	250	—

**Please note:** All capacities are a guideline only and are based on the maximum use of the space available for standard setups. They may be reduced by staging, technical equipment, dance floors, type of menu being served or entertainment.



# LAVISH INTERIORS FOR ELEGANT EVENTS

AUCKLAND  
CONVENTIONS  
venues & events



## AUCKLAND TOWN HALL

As one of New Zealand's most important heritage buildings, Auckland Town Hall is a stunning backdrop for any event. Attractive stained-glass windows, ornate plasterwork and spectacular chandeliers combine to make this a beautiful venue.

Auckland Conventions Venues & Events

T 0800 54 98 98 | +64 9 307 5498 | 1800 54 98 98 (AUST)

E [events@aucklandconventions.co.nz](mailto:events@aucklandconventions.co.nz) W [aucklandconventions.co.nz](http://aucklandconventions.co.nz)

### Features

Significant heritage building

Central Auckland City location

Stunning Edwardian Baroque design

Renowned for excellent acoustics

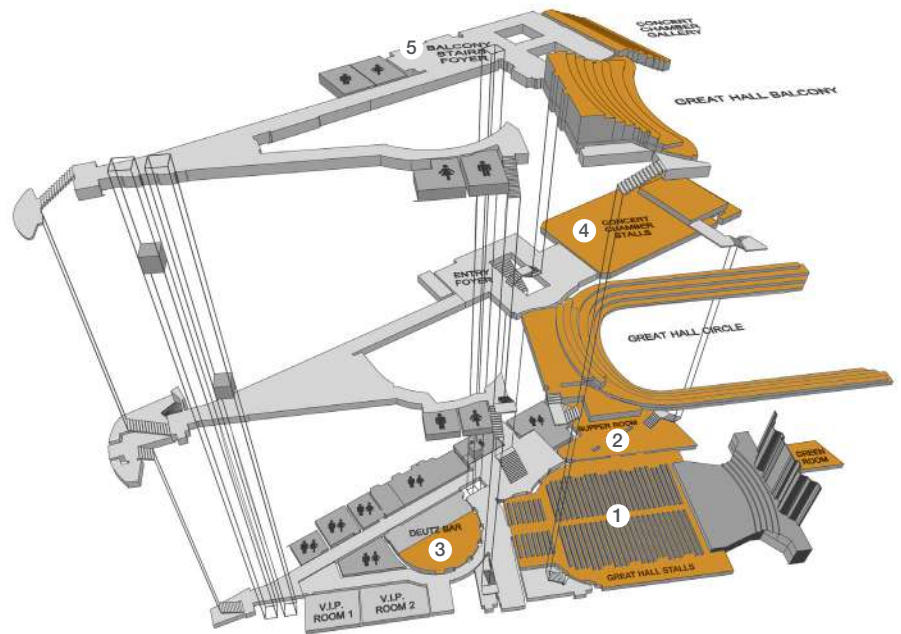
Theatre quality technical facilities onsite



# AUCKLAND TOWN HALL

Built in 1911, this landmark building was fully restored in the 1990s with event use in mind. Theatre-style seats in both the Great Hall and Concert Chamber are easily removed to create large open spaces.

Take the [Auckland Town Hall Virtual Tour](#)



## Capacity Chart

ROOMS	HEIGHT m	AREA m <sup>2</sup>	THEATRE	CLASSROOM	CABARET	BANQUET	COCKTAIL	EXHIBITION
Great Hall ①	16m	550m <sup>2</sup>	1529	400	320	350	670	40
Supper Room ②	4.15m	275m <sup>2</sup>	128	—	—	—	250	—
Deutz Bar ③	3.93m	105m <sup>2</sup>	—	—	—	—	150	—
Concert Chamber ④	9.7m	375m <sup>2</sup>	419	160	160	200	300	20
Balcony Foyer ⑤	5.3m	—	—	—	—	—	—	—

**Please note:** All capacities are a guideline only and are based on the maximum use of the space available for standard setups. They may be reduced by staging, technical equipment, dance floors, type of menu being served or entertainment.



# EXPERIENCE

A VENUE LIKE NO OTHER

AUCKLAND  
CONVENTIONS  
venues & events



## AUCKLAND ZOO

With Aotearoa's largest home of native and exotic wildlife as backdrop, Auckland Zoo's distinctive venues make for memorable events, cocktail functions, seated dinners, weddings and more.

Auckland Conventions Venues & Events

T 0800 54 98 98 | +64 9 307 5498 | 1800 54 98 98 (AUST)

E [events@aucklandconventions.co.nz](mailto:events@aucklandconventions.co.nz) W [aucklandconventions.co.nz](http://aucklandconventions.co.nz)

### Features

Distinctive and flexible venues

Easy access, located close to motorway and minutes from Auckland City

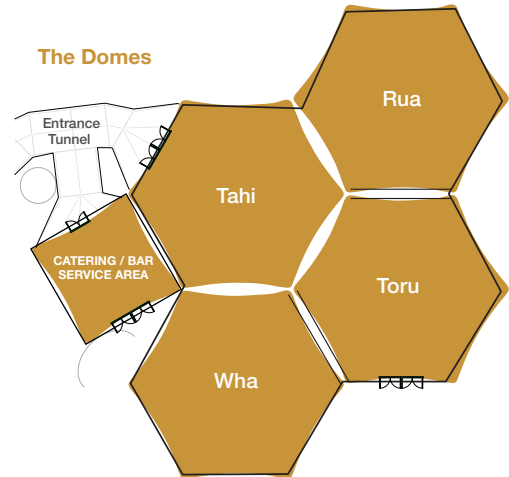
Available for day and evening bookings

Free parking



# AUCKLAND ZOO

Conveniently located minutes from the Auckland CBD, Auckland Zoo offers an inspiring setting for your next event. With unique venues such as The Domes as well as indoor and covered spaces, let our team of experienced event planners tailor a memorable event to your needs.



## Capacity Chart

ROOMS	HEIGHT m	AREA m <sup>2</sup>	THEATRE	CLASSROOM	U-SHAPE	CABARET	BANQUET	COCKTAIL	BOARDROOM
The Domes	Varied	650m <sup>2</sup>	350	—	—	—	350	500	—
The Old Elephant House with Courtyard*	—	170m <sup>2</sup>	—	—	—	—	120	200	—
The Old Elephant House Courtyard only#	—	70m <sup>2</sup>	50	—	—	—	50	100	—
Lion Viewing Shelter*	—	67m <sup>2</sup>	—	—	—	—	60	80	—
Lion Viewing Shelter with African Savannah (uncovered)*	—	—	—	—	—	—	60	80	—
Te Puna (opening in March 2020)*	—	80m <sup>2</sup>	150	—	—	—	150	250	—
Cotton Top Tamarin Shelter <sup>‡</sup>	—	—	40	—	—	—	—	60	—
Auckland Zoo*	—	—	350	—	—	—	350	4000	—

\* Available for evening hire only

# Available for day hire only

‡ Available for wedding ceremonies only

**Please note:** All capacities are a guideline only and are based on the maximum use of the space available for standard setups. They may be reduced by staging, technical equipment, dance floors, type of menu being served or entertainment.





# VERSATILE VENUE

## AT A TRANQUIL BEACHSIDE LOCATION

AUCKLAND  
CONVENTIONS  
venues & events



## BRUCE MASON CENTRE

Nestled in the hub of Takapuna, the Bruce Mason Centre is only a stone's throw from stunning the Takapuna Beach and a selection of restaurants, shops and accommodation.

Auckland Conventions Venues & Events

T 0800 54 98 98 | +64 9 307 5498 | 1800 54 98 98 (AUST)

E [events@aucklandconventions.co.nz](mailto:events@aucklandconventions.co.nz) W [aucklandconventions.co.nz](http://aucklandconventions.co.nz)

### Features

Tranquil beachside location

Escape the hustle and bustle of the city

Only 15 minutes from Auckland CBD

Six flexible spaces

Theatre with tiered seating

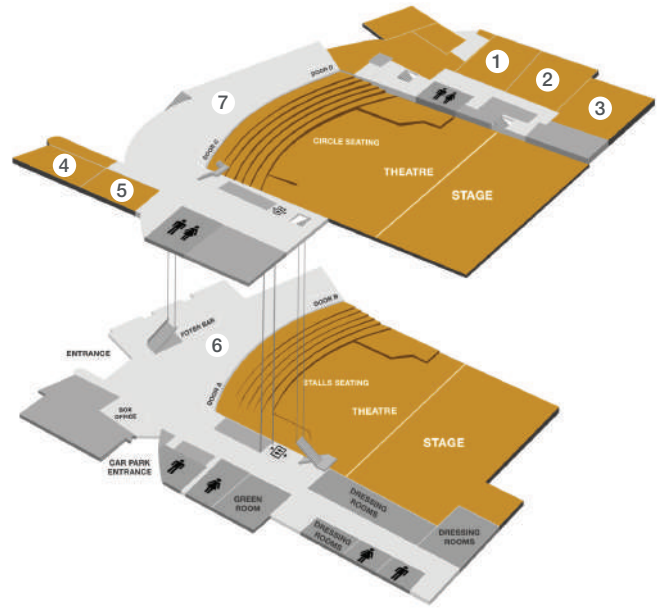
Theatre transforms for dramatic gala dinners



# BRUCE MASON CENTRE

With six flexible spaces and two spacious foyers on offer, the Bruce Mason Centre is able to cater for events ranging from boardroom meetings to large corporate conferences, trade shows, cocktail evenings and gala dinners. All rooms have natural light, some with views of Rangitoto Island and Takapuna Beach. Breakout areas are available including access to two outdoor balconies. The state-of-the-art theatre is perfect for large conferences and can also be transformed into a floor space for elegant banquet dinners.

Take the [Bruce Mason Centre Virtual Tour](#)



## Capacity Chart

ROOMS	HEIGHT m	AREA m <sup>2</sup>	THEATRE	CLASSROOM	U-SHAPE	CABARET	BANQUET	COCKTAIL	EXHIBITION
Theatre Stalls & Circle	—	—	1102	—	—	—	—	—	—
Auditorium Flat Floor & Terraces	—	1200m <sup>2</sup>	—	—	—	—	406	820	—
Hauraki 1 ①	3m	84m <sup>2</sup>	60	33	21	48	60	100	7
Hauraki 2 ②	3m	92m <sup>2</sup>	66	33	21	40	60	100	7
Hauraki 3 ③	3m	98m <sup>2</sup>	65	45	21	48	50	50	7
Hauraki Room 1, 2 & 3	3m	274m <sup>2</sup>	246	93	—	144	180	400	18
Hauraki Room 1 & 2	3m	176m <sup>2</sup>	137	66	39	96	120	160	13
Hauraki Room 2 & 3	3m	190m <sup>2</sup>	157	60	39	88	120	160	12
Killarney Room 1 ④	3m	75m <sup>2</sup>	52	24	15	24	36	50	4
Killarney Room 2 ⑤	3m	51m <sup>2</sup>	40	15	9	16	24	30	2
Killarney Room 1 & 2	3m	126m <sup>2</sup>	84	36	—	48	60	90	7
Ruby Ormiston Foyer ⑥	—	350m <sup>2</sup>	—	—	—	—	—	350	8
Cannon Gallery ⑦	—	200m <sup>2</sup>	—	—	—	—	—	150	6

**Please note:** All capacities are a guideline only and are based on the maximum use of the space available for standard setups. They may be reduced by staging, technical equipment, dance floors, type of menu being served or entertainment.



# SPECTACULAR BACKDROP FOR YOUR NEXT EVENT

AUCKLAND  
CONVENTIONS  
venues & events



## MT SMART STADIUM

Suitable for exhibitions, dinners, conferences, meetings and corporate functions, Mt Smart Stadium is the ideal location for your next event.

With floor-to-ceiling windows offering natural light, your guests can enjoy spectacular views over the Mt Smart field.

Auckland Conventions Venues & Events

T 0800 54 98 98 | +64 9 307 5498 | 1800 54 98 98 (AUST)

E [events@aucklandconventions.co.nz](mailto:events@aucklandconventions.co.nz) W [aucklandconventions.co.nz](http://aucklandconventions.co.nz)

### Features

Unique sporting atmosphere

Free parking

Easy access, located close to the motorway

Impressive views over playing fields

Plenty of natural light



## MT SMART STADIUM

Renowned for its world-class concerts, sporting and athletic events, Mt Smart Stadium offers flexible spaces to create truly unique experiences for your guests. Easily accessible from the motorway and only 15 minutes' drive from the Auckland CBD, Mt Smart Stadium is a convenient option on the outskirts of Auckland City. Spaces within Mt Smart Stadium also offer the perfect blank canvas for creating themed cocktail functions and stylish gala dinners.



### Capacity Chart

ROOMS	HEIGHT m	AREA m <sup>2</sup>	THEATRE	CLASSROOM	CABARET	BANQUET	COCKTAIL	EXHIBITION
Full East Lounge (East & South Lounges)	3.5m	1257m <sup>2</sup>	700	500	520	650	1000	87
East Lounge ①	3.5m	945m <sup>2</sup>	700	500	384	480	700	—
South Lounge ②	3.5m	312m <sup>2</sup>	200	80	160	200	300	—
Stacey Jones Lounge ③	2.55m	252m <sup>2</sup>	40	20	—	—	200	—
John Walker Lounge ④	2.70m	311m <sup>2</sup>	100	50	136	170	250	—

**Please note:** All capacities are a guideline only and are based on the maximum use of the space available for standard setups. They may be reduced by staging, technical equipment, dance floors, type of menu being served or entertainment.



# A VERSATILE VENUE FOR YOUR NEXT EVENT

AUCKLAND  
CONVENTIONS  
venues & events



## NORTH HARBOUR STADIUM

From private suites for small intimate meetings, to larger rooms for conferences, school balls and gala dinners; or a whole floor for large exhibitions, trade shows and product launches, North Harbour Stadium has a space to suit all events.

Auckland Conventions Venues & Events

T 0800 54 98 98 | +64 9 307 5498 | 1800 54 98 98 (AUST)

E [events@aucklandconventions.co.nz](mailto:events@aucklandconventions.co.nz) W [aucklandconventions.co.nz](http://aucklandconventions.co.nz)

### Features

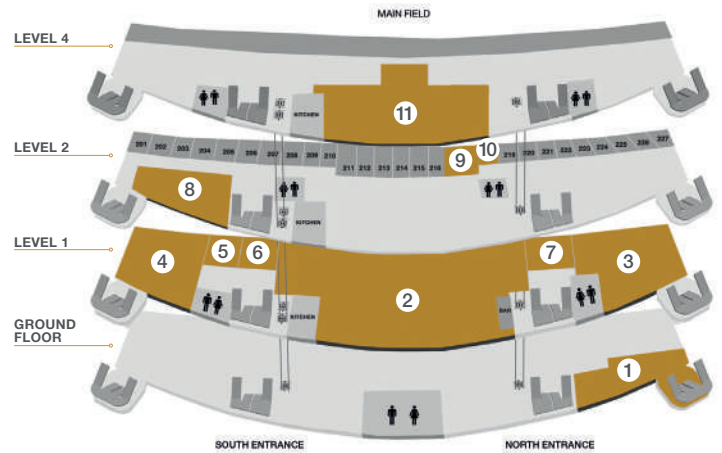
- 12 versatile spaces
- 1,200 car parks on site
- Easy access to motorway
- Located 30 minutes from Auckland CBD in Albany



# NORTH HARBOUR STADIUM

With easy motorway access and 1,200 car parks on site, North Harbour Stadium is perfect for any event or function where you want to get away from it all for business or pleasure.

Level 1 of North Harbour Stadium is a versatile space that has six separate areas, including three lounges. Every room on this level has floor-to-ceiling windows overlooking the main stadium field, and the ability to retract and expand the rooms with soundproof dividers.



## Capacity Chart

ROOMS	HEIGHT m	AREA m <sup>2</sup>	THEATRE	CLASSROOM	U-SHAPE	CABARET	BANQUET	COCKTAIL	EXHIBITION
Concourse Lounge   Ground Level ①	3m	120m <sup>2</sup>	88	30	21	48	—	160	—
North Harbour Lounge   Level 1 ②	2.65m	974m <sup>2</sup>	697	207	—	368	500	1000	98
North Lounge   Level 1 ③	2.65m	327m <sup>2</sup>	254	84	34	128	190	350	23
South Lounge   Level 1 ④	2.65m	248m <sup>2</sup>	180	92	32	112	150	300	17
Bayswater & Mairangi Room   Level 1	2.65m	135m <sup>2</sup>	100	40	30	64	80	120	10
Bayswater Room   Level 1 ⑤	2.65m	68m <sup>2</sup>	50	16	18	32	40	75	6
Mairangi Room   Level 1 ⑥	2.65m	68m <sup>2</sup>	50	16	18	32	40	75	6
Waiake Room   Level 1 ⑦	2.65m	68m <sup>2</sup>	50	16	18	32	40	75	6
Referees Lounge   Level 2 ⑧	2.65m	240m <sup>2</sup>	135	36	30	80	100	120	10
Ross Finlayson Executive Suite   Level 2 ⑨	2.32m	55m <sup>2</sup>	—	—	14	—	30	40	—
Private Suite 218   Level 2 ⑩	2.32m	25m <sup>2</sup>	20	—	—	—	—	16	—
Level Three Lounge   Level 3 ⑪	3.65m	482m <sup>2</sup>	250	100	—	150	250	600	—

**Please note:** All capacities are a guideline only and are based on the maximum use of the space available for standard setups. They may be reduced by staging, technical equipment, dance floors, type of menu being served or entertainment.



# A BLANK CANVAS TO MAKE YOUR OWN

AUCKLAND  
CONVENTIONS  
venues & events



## SHED 10

Shed 10 is a 100-year-old cargo shed full of character and historical significance. This well-appointed but blank canvas is yours to create an event exactly as you choose. Built in 1910, this heritage-listed building has undergone a thoughtful restoration, providing facilities for visiting cruise ships as well as the ambience and amenities you would expect in a premium events space.

Auckland Conventions Venues & Events

T 0800 54 98 98 | +64 9 307 5498 | 1800 54 98 98 (AUST)

E [events@aucklandconventions.co.nz](mailto:events@aucklandconventions.co.nz) W [aucklandconventions.co.nz](http://aucklandconventions.co.nz)

### Features

Heritage building

2,200m<sup>2</sup>

Multipurpose event venue

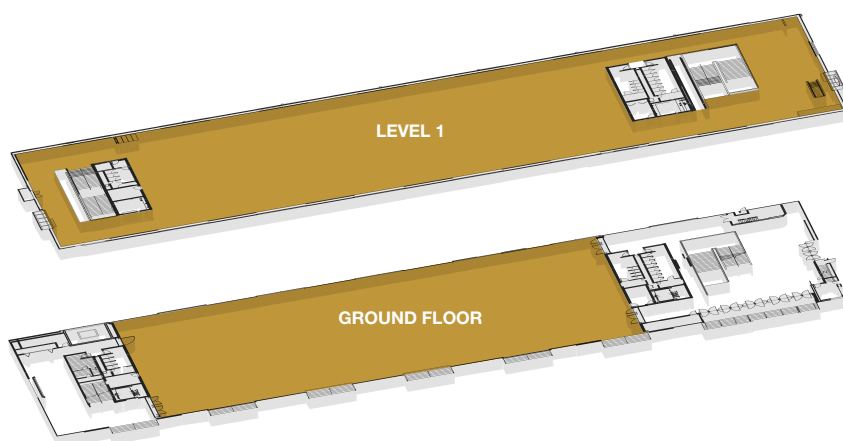
Located on Queens Wharf  
on the Auckland waterfront

Easy access, located  
close to motorway



## SHED 10

The Ground Floor retains the Shed's robust industrial character with a concrete floor, steel columns and exposed beams. Level 1 is warm and rich in character, detailed with timber flooring, exposed steel trusses and a gable ceiling with occasional skylights. Both floors offer natural light and convenient access. Shed 10 is wonderfully New Zealand in character and quintessentially Auckland.



### Capacity Chart

ROOMS	HEIGHT m	AREA m <sup>2</sup>	THEATRE	BANQUET	COCKTAIL	EXHIBITION
Ground Floor	4.9m	2216m <sup>2</sup>	1575	700	2000	68
Level 1	3.75m	2204m <sup>2</sup>	1000	800	1000	53

**Please note:** All capacities are a guideline only and are based on the maximum use of the space available for standard setups. They may be reduced by staging, technical equipment, dance floors, type of menu being served or entertainment.





# OPULENCE IN THE HEART OF THE CITY

AUCKLAND  
CONVENTIONS  
venues & events



## THE CIVIC

The Civic, built in 1929, is one of the few remaining atmospheric theatres in the world. The first purpose-built cinema of this type in the country, The Civic is a much-loved Auckland landmark and entertainment venue. The Civic underwent an extensive refit in the late 1990s and as a result the venue combines 1920's glamour with modern technology.

Auckland Conventions Venues & Events

T 0800 54 98 98 | +64 9 307 5498 | 1800 54 98 98 (AUST)

E [events@aucklandconventions.co.nz](mailto:events@aucklandconventions.co.nz) W [aucklandconventions.co.nz](http://aucklandconventions.co.nz)

### Features

Opulent and dramatic setting

Domed ceiling with spectacular starscape

Four unique spaces to choose from

Central Auckland City location

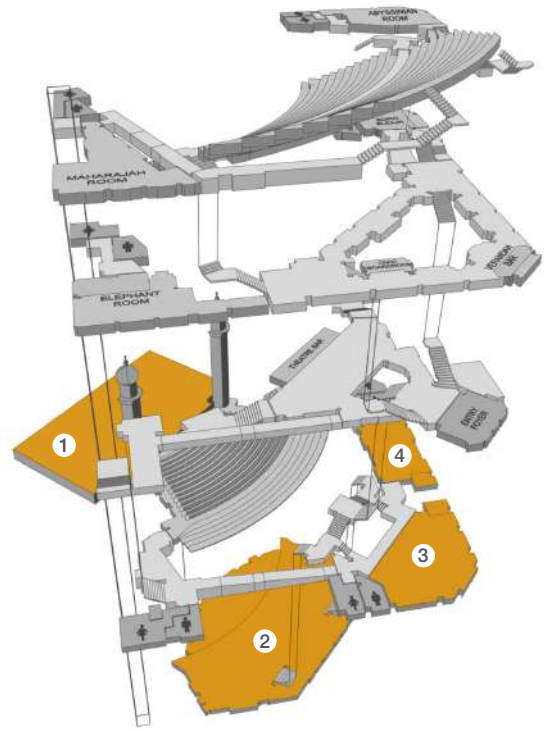
Moorish design with turrets, minarets and spires



## THE CIVIC

The Civic is an opulent and dramatic venue with unique rooms for hire. Additional elements such as the large Indian/North African-themed foyer, sweeping double staircases and extensive circulation space around the ornate bars make The Civic very well-suited for large events. It is a popular venue for gala dinners, cocktail parties, awards ceremonies and hostings.

Take [The Civic Virtual Tour](#)



### Capacity Chart

ROOMS	HEIGHT m	AREA m <sup>2</sup>	THEATRE	CABARET	BANQUET	COCKTAIL
The Civic Auditorium ①	24m	1990m <sup>2</sup>	2378	—	—	—
Stage	—	—	—	—	210	300
Wintergarden ②	4m	550m <sup>2</sup>	428	256	320	525
Safari Room ③	2.75m	160m <sup>2</sup>	70	64	80	80
Taj Mahal Room ④	4m	110m <sup>2</sup>	63	40	50	70

**Please note:** All capacities are a guideline only and are based on the maximum use of the space available for standard setups. They may be reduced by staging, technical equipment, dance floors, type of menu being served or entertainment.



# EXCEPTIONALLY UNIQUE ON QUEENS WHARF

AUCKLAND  
CONVENTIONS  
venues & events



## THE CLOUD

The Cloud is a unique, modern structure that has become a landmark along Auckland's waterfront. It reflects Aotearoa – Land of the Long White Cloud. Built as a temporary structure to accommodate an inner-city fan zone during Rugby World Cup 2011, it has since won a place in the hearts of Aucklanders and visitors alike.

Auckland Conventions Venues & Events

T 0800 54 98 98 | +64 9 307 5498 | 1800 54 98 98 (AUST)

E [events@aucklandconventions.co.nz](mailto:events@aucklandconventions.co.nz) W [aucklandconventions.co.nz](http://aucklandconventions.co.nz)

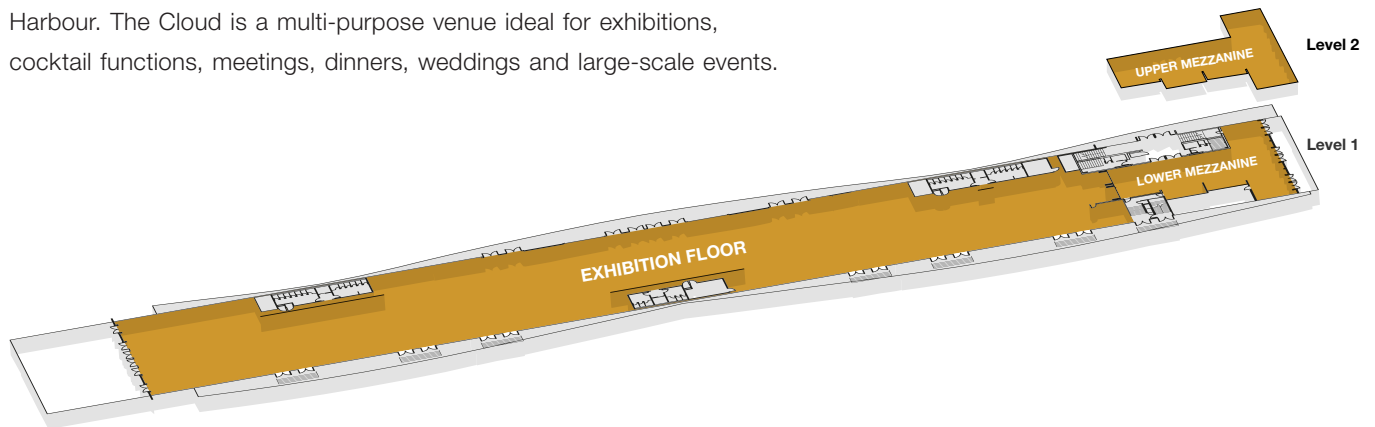
## Features

- Unique and modern
- Pillar-less venue
- Up to 2,000 capacity for a cocktail event
- Ideal for exhibitions and large scale events
- Easy access, located close to the motorway.



## THE CLOUD

At almost 180m long, the pillar-less exhibition floor can accommodate 107 3x3m booths, 1,500 people for a seated dinner, 2,000 guests for cocktails, and works exceptionally well for large-scale events. Located on Queens Wharf on the Auckland waterfront, the Mezzanine rooms at the northern end of The Cloud offer unparalleled views of the Waitematā Harbour. The Cloud is a multi-purpose venue ideal for exhibitions, cocktail functions, meetings, dinners, weddings and large-scale events.



### Capacity Chart

ROOMS	HEIGHT m	AREA m <sup>2</sup>	THEATRE	BANQUET	COCKTAIL	EXHIBITION
Exhibition Floor	Varied	2697m <sup>2</sup>	2218	1500	2000	107
Lower Mezzanine	2.8m	228m <sup>2</sup>	100	100	100	11
Upper Mezzanine	Varied	444m <sup>2</sup>	230	190	230	11

**Please note:** All capacities are a guideline only and are based on the maximum use of the space available for standard setups. They may be reduced by staging, technical equipment, dance floors, type of menu being served or entertainment.

