



CROWNE PLAZA®

AN IHG® HOTEL

CHRISTCHURCH

Inspiring Meetings Need Inspiring Spaces





WE'RE ALL BUSINESS, MOSTLY

In the centre of it all

Whether it's an intimate event for a small group or a large multi-day conference, the new Crowne Plaza Christchurch is your ideal place to connect.

Crowne Plaza Christchurch is the perfect base for your next event with flexible meeting spaces, modern AV solutions and friendly, knowledgeable staff going the extra mile to ensure your event is a complete success.



SO WHY US?

From the moment you book your event, be confident you're in the best hands with our expert team on hand to ensure it runs seamlessly and is the best it can be. Let us connect you with the city, local venues, and our friendly team when you step inside our spacious, light-filled lobby.

The hotel overlooks historic Victoria Square and the Avon River, a landmark building featuring 204 spacious and modern rooms and suites, a range of dining options and four technology-driven and comfortable meeting spaces.



Meet a new way to do meetings

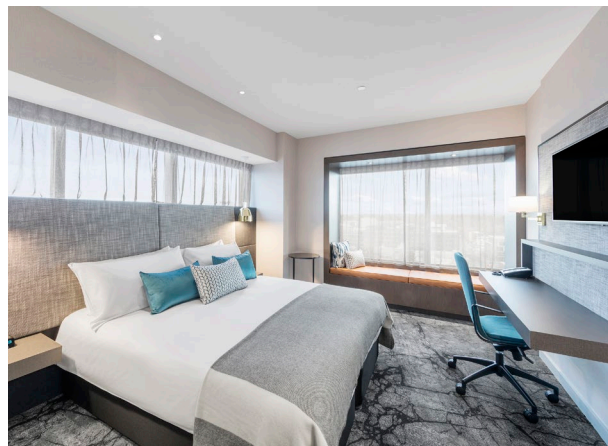
Our function rooms are designed with everything from smaller meetings to large-scale presentations in mind.

The names of our meeting spaces connect Crowne Plaza to the early history of Victoria Square. One of the city's first hotels, the Oram brothers' Golden Fleece, once stood on the same site.

Our Golden Fleece conference room caters for up to 90 banquet style while the Ellis, Gartner and Oram rooms, all boardroom style, cater for eight to 12 respectively. Combine all three boardrooms for a medium-sized room with natural light and views of historic Victoria Square.

Get the rewards

Crowne Plaza Christchurch is a proud member of over 5,000 global Intercontinental Hotels Group (IHG) hotels and with that comes the IHG® Business Rewards Club. Free to join, it is an award-winning loyalty program that rewards you for every meeting, event, conference or accommodation room booked. Choose from a catalogue of reward options like handbags and jewellery, add some extra nights to your next vacation with discounted room rates, or transfer your reward points to air points and hit the skies.



Space to relax

Our spacious Superior Rooms are the perfect place to relax after a busy day, plus offer enough space to prepare for tomorrow's meeting. Upgrade to an Executive Room and enjoy stunning views and extra amenities including a capsule coffee machine.

It goes without saying that your group is guaranteed a great night's sleep – with new beds in supremely comfortable rooms and a range of configurations on offer. Experience the Crowne Plaza Sleep Advantage programme. With superb bedding, pillow options and quiet zones, you'll wake up with a smile.



Food for thought

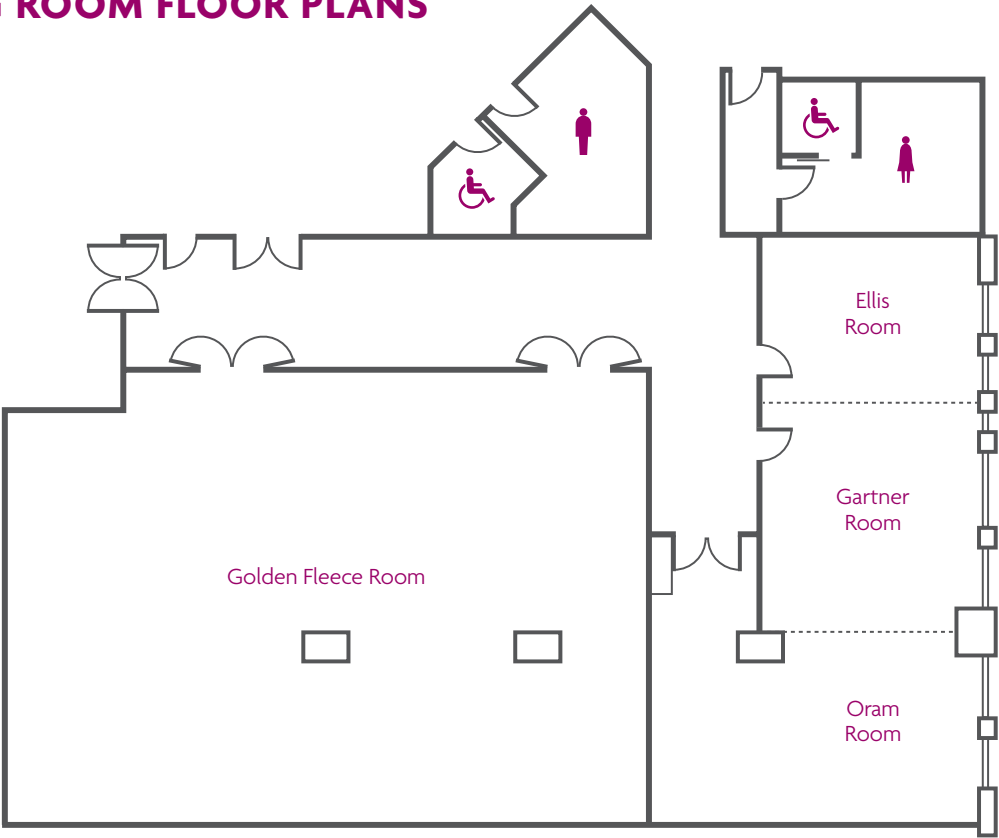
We have many catering options available to fit your event. No matter if you want a full hot buffet breakfast, a snack in between or plated lunch, our amazing kitchen team will accommodate your wishes and will take all dietary requirements into account.

Take your brainstorm to Café 1851 and enjoy the relaxed atmosphere with a café menu or come for a post-conference drink and try one of our signature cocktails at Social Wine Bar. Tummy rumbling? Check out Market Place Restaurant next to our meeting rooms, serving New Zealand cuisine prepared with the best local and fresh produce and an extensive breakfast buffet seven days a week. If you feel like staying in, check out our healthy in-room dining menu.

MEETING ROOM CONFIGURATIONS

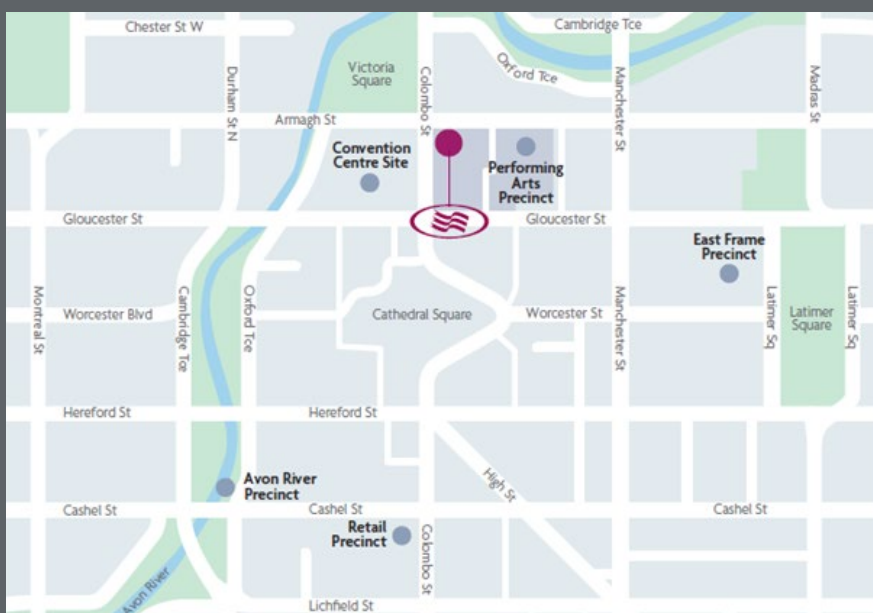
| ROOM | AREA (m) | HEIGHT (m) | THEATRE | U-SHAPE | BOARDROOM | CLASSROOM | BANQUET | CABARET | COCKTAIL |
|-----------------------------|----------|------------|---------|---------|-----------|-----------|---------|---------|----------|
| Golden Fleece Room | 193 | 2.8 | 140 | 36 | 38 | 102 | 90 | 72 | 140 |
| Ellis Room | 24 | 2.8 | 15 | 9 | 8 | 12 | 10 | 8 | 15 |
| Gartner Room | 32 | 2.8 | 25 | 9 | 12 | 18 | 20 | 16 | 15 |
| Oram Room | 41 | 2.8 | 30 | 15 | 12 | 18 | 20 | 16 | 25 |
| Ellis + Gartner Rooms | 56 | 2.8 | 42 | 21 | 18 | 30 | 30 | 24 | 40 |
| Gartner + Oram Rooms | 73 | 2.8 | 46 | 16 | 20 | 30 | 40 | 24 | 60 |
| Gartner, Oram + Ellis Rooms | 97 | 2.8 | 70 | 30 | 24 | 48 | 40 | 32 | 70 |

MEETING ROOM FLOOR PLANS



Check us out and check in

If you are searching for an amazing location and impressive facilities for your next meeting, look no further than Crowne Plaza Christchurch. Our dedicated team will ensure your event is a great success. If you have any queries while in house, our team are available 24/7 to provide whatever you need, whenever you need it.



CROWNE PLAZA®

AN **IHG®** HOTEL
CHRISTCHURCH

764 Colombo Street, Christchurch 8011
New Zealand
p: +64 (3) 741 2800 or 0800 801 111
christchurch.crowneplaza.com