

VOL 06 | 2017

TOUR



Wraps & In The Bag

TRAVEL



Dubai, Vietnam & more...

GEAR



Callaway, Cobra Golf & more...



WIN Oakley Eyewear

discovergolf

MAGAZINE

inspiring your game

NEW ZEALAND

THE LODGE AT KINLOCH

More Than Jack Nicklaus Signature Golfing

THE LODGE AT KINLOCH

FOR WHEN YOU WANT EVEN MORE THAN JACK NICKLAUS SIGNATURE GOLFING

With its superb hospitality, comfort and cuisine, The Lodge at Kinloch paired with the Jack Nicklaus Signature golf course offers guests an unforgettable sporting and leisure experience.

'Kinloch is a beautiful tranquil place. A place where you can spend time with friends and family to enjoy experiences and create memories that will endure.' – JACK NICKLAUS

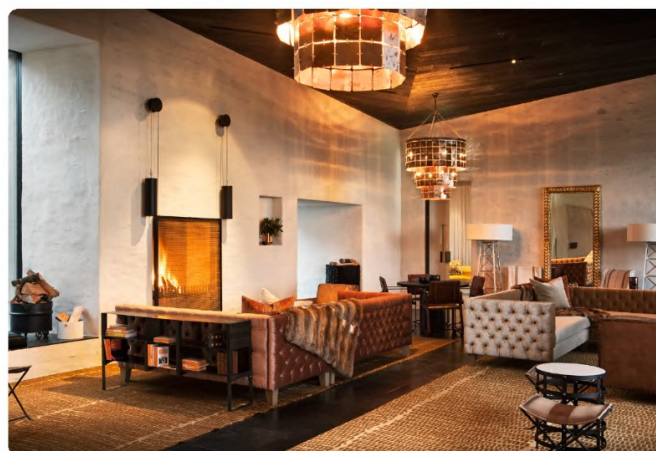


Set in the very heartland of New Zealand's scenic North Island, The Lodge at Kinloch and the Jack Nicklaus signature golf course share a sensational landscape overlooking Lake Taupo. It's New Zealand's biggest and most beautiful sporting and fishing lake. Opened early in 2016, the Lodge recreates the feel of a namesake Scottish castle, and adds 21st century design and uber-luxury.

The main Lodge's architectural features include schist-stone exteriors backed by stunning vistas of Kinloch Club golf course and ever-changing Lake Taupo.

An undoubted highlight is the Lodge's world-class dining room. It's a bold, airy yet calm space that's perfect for long, slow dining seated indulgently on richly upholstered banquettes and lush sofas. Complementing spectacular local and international wines, you'll share an Estate-to-Plate philosophy. Every menu is based on produce direct from 2000-ha of native nearby wilderness and sister lodge Treetops, owned by the creator of The Kinloch Club, John Sax. These include 100% pesticide-free and organic heritage, indigenous and seasonal vegetables, orchard fruits and native comb honey. There's also estate-reared wild pig, red, fallow and sika deer, wapiti (elk), water buffalo, sheep, rabbit, pheasant, partridge, geese and duck.

The Lodge leisure spaces include a baronial Grand room that's opulent with buttoned-velvet sofas, brass and copper. The Bar features masculine furnishings harking back to Colonial times with leather and rock surfaces, cowhide, and burnt wood flooring. The regal Den offers contrasts of soft, warm silver and golds, plus slate floors and luxurious New Zealand wool rugs. It's a perfect choice for private dinners and small meetings.





Three styles of accommodation irresistibly invite rest and recuperation, all a short stroll away. Outdoor patios and furnished terraces flow to calm interiors designed to enhance personal tranquility in surroundings of immersive, contemporary comfort. All feature dramatically framed views of the course and lake, carbon-neutral fireplaces, oak floors, handmade New Zealand rugs. Luscious bathrooms include both a stand-alone and two-person bathtub as well as a walk-in shower.

One-Bedroom Villas are perfect for singles or couples wanting a full, deluxe option. The designer bedroom and en-suite bathroom are accompanied by a sleek kitchen and hospitable lounge area with fireplace, a furnished terrace and a private courtyard for outside dining.

For a family or friends, Two-Bedroom Villas offer two beautifully-appointed bedrooms, both with en-suite bathrooms, a luxuriously furnished lounge area with fireplace, a den for reading or relaxing, a full kitchen, two furnished terraces and a private courtyard for outside dining.

Junior Suites offer a spacious Lodge guestroom of stylish design and ambience, full bathroom, and a personal espresso maker.

Kinloch's Spa specialises in sporting and therapeutic wellness and beauty treatments, focused on Signature Prescriptive Organics for men and women. Near 100% pesticide free estate reared Manuka honey is used for its Signature treatment; a body scrub and massage with local pure sourced mud—both highly rich in antioxidants and healing qualities. For other luxury treatments, they offer a 100% organic Janesce all-plant skin care range. There's also an infinity pool, a gym and onsite tennis courts.





The Kinloch Club boasts New Zealand's only 18-hole Jack Nicklaus Signature Golf Course and cleverly merges aspects of traditional Scottish links with modern parkland course design. Voted New Zealand's No. 1 golf course by a select committee of golf and tour professionals, Kinloch Club was chosen as one of the top 100 golf courses outside America by *'Golf Digest Magazine'*. *'US Travel and Leisure'* golf magazine cited The Kinloch Club as one of the world's top 10 new golf courses. It is the only course outside North America to feature on that prestigious list.

The par-72 Jack Nicklaus Signature course uses natural features to enhance shot values so that golfers can work on every aspect of their game, making it a uniquely challenging course. Experienced golfers consider every one of the 18 holes a Signature contest, because designed-in depths of mystery the layout repeatedly demands players to find their best shots onto the green. Rugged bunkers across the course add to the encounters and the fairways possess New Zealand's finest drainage, making Kinloch arguably the country's finest all-season course.

Best of all, the Lodge at Kinloch Club means you or your partner don't even have to play golf to enjoy these remarkable surroundings. Dine superbly, indulge your inner and outer self in the Spa, explore your extraordinary surroundings, or simply sit in front of an open fireplace and read. For bigger life moments, The Lodge at Kinloch is also an unequalled new choice for weddings, conferences and private golf tournaments.

The Lodge at Kinloch Club—for the times you and your partner want even more than Jack Nicklaus Signature golfing.

VIDEO 



Unpack, inhale and unwind



**An invitation to experience New Zealand's
newest Uber-Luxury Lodge
Winter 2017**

Special Package **THE LODGE AT KINLOCH**

Offer includes:

Uber-luxury escape in a junior suite (stay two nights and we will upgrade you to the calm sophistication of a One-Bedroom Villa), pre-dinner drinks and canapés, Estate-to-Plate five-course gourmet dinner and full breakfast. PLUS, your stay offers exceptional complimentary inclusions of:

- Champagne and Chocolate Truffles; a bottle of Bollinger chilled and waiting in your suite or villa on arrival with house-made chocolate truffles..

OR

- Two rounds of golf on the Jack Nicklaus designed 18-hole golf course (cart not included).

OR

- Hike the Tongariro Alpine Crossing, New Zealand's most popular day hike. Includes picnic backpack lunch and beverages for two people*.

Stay two nights and receive an upgrade to a beautiful One-Bedroom Villa with oak floors, open fireplace and floor-to-ceiling windows to take in the stunning view.

*Special offer: *\$505 plus GST pp per night (twin share).*

Valid until 31 October 2017.

TERMS & CONDITIONS: Subject to availability. Upgrade to One-Bedroom Villa guaranteed on booking. *Transfers to/from Tongariro Alpine Crossing not included. Private guide POA.* **Contact Drummond Golf Travel for more info.**

BOOK NOW

DRUMMOND GOLF TRAVEL

ALL ENQUIRIES PLEASE CONTACT SAM GOLE
0412 230 769 | travel@drummondgolf.com