



## PARADISE INN

Rarotonga

Situated in downtown Avarua just minutes away from the town center and nestled on the prime beachfront location, this small intimate place homes 17 self-contained rooms and a communal lounge. Paradise Inn provides easy accessibility and a great atmosphere for the budget conscious traveler and hosts a friendly environment with minimal fuss at an affordable price.

This pleasant motel is located on the Northern coast of Rarotonga, just meters from the waters edge and less than 10 minutes' drive from the Airport.

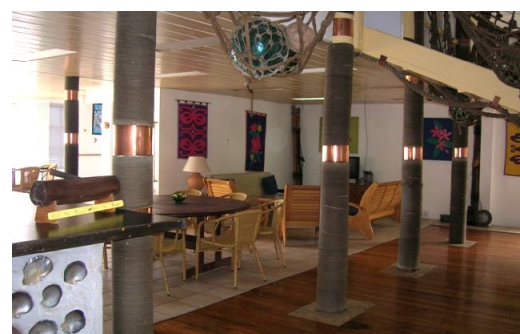
Each unit features a studio layout and is fitted with a small kitchenette with basic amenities including a mini bar fridge, microwave, tea/coffee making facilities and a TV for your indoor enjoyment. A Wi-F hotspot is available throughout the property and vouchers can be purchased from reception.

The property offers stunning panoramic views of the coral and shallow lagoon and is known for its 'surf club' character. The large outdoor courtyard allows guest to enjoy the daily sunsets in the relaxed and tropical ambience.

Paradise Inn is within easy walking distance and close proximity to many outside facilities including several local grocery stores, the Avarua CICC Church, a comprehensive range of national archive centers, government agencies and offices, public transportation and rental agencies, cafes, restaurants and bars. Victoria Park is also within easy walking range for you to enjoy a weekend village game.



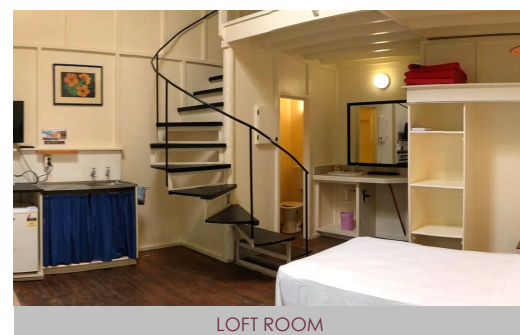
ENTRANCE TO PARADISE INN



COMMUNAL LOUNGE AREA



SPECTACULAR LAGOON VIEW



LOFT ROOM

### TOP FEATURES

#### Absolute Beachfront

Nestled on the beachfront, the property allows the best unobstructed views of the lagoon, Pacific Ocean and beyond.

#### Great Location

Paradise Inn has great access to outside conveniences including TEM Store (open 7 days a week), the Avarua township and of course, the sandy beach at your doorstep.

#### Economical Accommodation

An absolute great choice for business or leisure travellers looking for a stress-free environment with minimal disruption and peacefulness.

#### Onsite Assistance

Managers residence is based onsite and is available for assistance at any time necessary.

### CHILD POLICY

**CHILDREN ARE WELCOME** - Children are welcome and charged as per normal rates

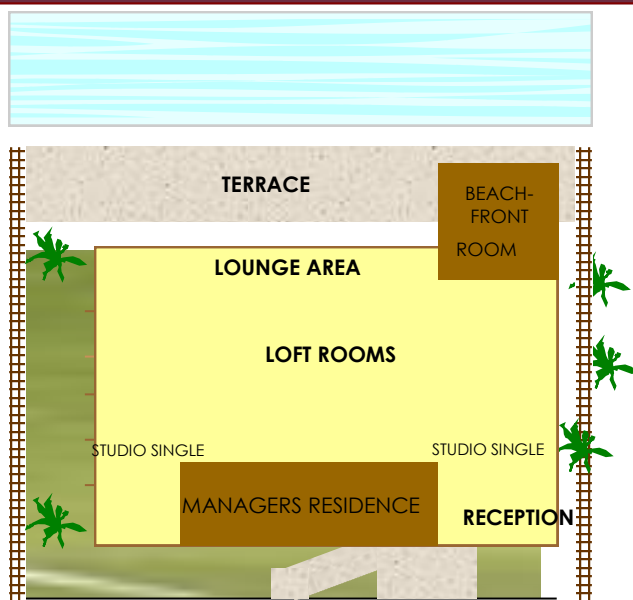
### INCLUSIONS

Daily Room Service and Complimentary tea & coffee making facilities

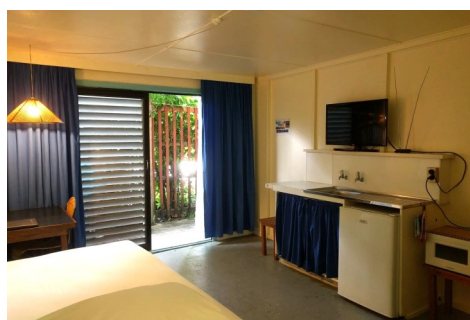
## ROOM CONFIGURATION & LAYOUT

ROOM CATEGORIES	TOTAL ROOMS	BEDDING CONFIGURATION	MAX PAX
STUDIO SINGLE	4	1 X SINGLE BED	1
LOFT ROOM	13	2 X SINGLE BED / 1 X QUEEN BED	4

## PROPERTY LAYOUT



MAIN ROADSIDE



STUDIO SINGLE



LOFT ROOM

## PROPERTY LOCATION



PROXIMITY TO	DRIVE / WALK TIME
AIRPORT	7 MINS DRIVE
AVARUA TOWNSHIP	5 MINS WALK
<b>RESTAURANTS &amp; CAFES</b>	
BAMBOO JACKS	2 MINS WALK
TRADER JACKS	6 MINS WALK
MARGARITA'S RESTAURANT & BAR	10 MINS WALK/2 MINS DRIVE
BUS STOP	AT GATE
GROCERY STORES	NEARBY

## ROOM FACILITIES

	IN ROOM
AIR CONDITIONING	X
BATH IN ROOM	X
CEILING FAN	✓
DVD PLAYER	X
FIRE EXTINGUISHERS	✓
FULL OCEAN VIEW	X
HAIRDRYER	X
INTERNET CONNECTION	WIFI
KITCHENETTE	✓
PARTIAL OCEAN VIEW	✓
RADIO	X
REFRIGERATOR	✓
ROOM SERVICED	✓
SAFE IN ROOM	X
STATELITE TV + MOVIES	ONSITE
SHOWER IN ROOM	✓
STOVE TOP + OVEN	X
SURROUND SOUND SYSTEM	X
TEA/COFFEE FACILITIES	✓
TELEPHONE IN ROOM	X
TOILET IN ROOM	✓

## PROPERTY FACILITIES

	ON SITE
BABY SITTING FACILITIES	X
BBQ FACILITIES	X
BEACH ON SITE	✓
BICYCLES	X
BEAUTY/HEALTH SERVICES	X
FULL OCEAN VIEW	✓
GARDEN VIEW	X
HAIRDRYER	X
INTERNET CONNECTION	WIFI
KAYAKS	X
LAUNDRY SERVICE/FACILITY	✓
LUGGAGE STORAGE	✓
RESTAURANT/BAR	X
SAFETY DEPOSIT BOX	X
SHOP	NEARBY
SNORKELLING GEAR	X
SWIM ALL TIDES	X
SWIM SOME TIDES	✓
SWIMMING POOL	X
TOUR DESK	✓
VEHICLE RENTAL	X
WAITING LOUNGE	✓
WEDDING CO-ORDINATOR	X

UPDATED DECEMBER 2020